

CORDOLO JOLLY / JOLLY KERB

PRODOTTO IN PLASTICA RICICLATA / RECYCLED PLASTIC PRODUCT

**IDEALE PER
REALIZZARE
ROTATORIE
E CORDOLATURE
DI MARCIAPIEDI**

**FACILE
INSTALLAZIONE**

**FACILE
RIMOZIONE**

LUNGA DURATA

RICICLABILE

**IDEAL SOLUTION FOR
THE BUILDING UP
OF ROUNDABOUTS
AND FOR
PAVEMENTS**

**EASY
TO INSTALL**

**EASY
TO REMOVE**

LONG LASTING

RECYCLABLE

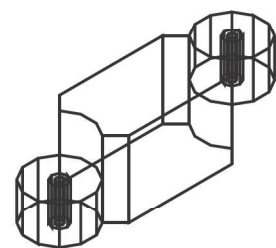
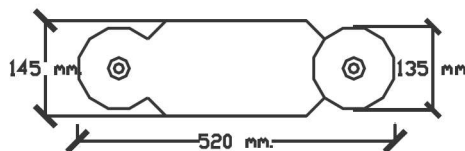
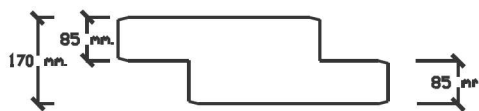


Stampaggio ad Iniezione Eco-Compatibile

ECOLOGICALLY FRIENDLY INJECTION MOULDING



SCHEDA TECNICA / TECHNICAL CARD



CORDOLO JOLLY

Dimensione cm 52x14,5xh17
1 mt = 2,5 pezzi

Peso Kg 5,950

Colori Nero - Giallo - Bianco

JOLLY KERB

Size cm 52x14,5xh17
1 meter = 2,5 pieces

Weight Kg 5,950

Colours Black - Yellow - White

I cordoli Jolly sono prodotti per iniezione e stampaggio a caldo partendo da una matrice polimerica a base di PVC riciclato con aggiunta di plasticizzante

The Jolly kerb is produced through warm injection moulding starting from a polymeric matrix made of recycled PVC with the addition of plasticizer.



Peso variabile +/- 10%
Variable weight +/- 10%


Stampaggio ad Iniezione Eco-Compatibile

ECOLOGICALLY FRIENDLY INJECTION MOULDING